



ARTEMISA

BEACH RESIDENCE



ENDLESS OCEAN VIEWS
TO ENJOY



BEACH
RESIDENCE

Mazatlan, the best tourist destination

Golden sand beaches, vibrant blue seas, and an abundance of tropical marine life. Mazatlán boasts numerous plants and animals found only in the tropics. Mazatlán, known as “The Pearl of The Pacific,” is in the southwestern portion of the Mexican State of Sinaloa, south of the Tropic of Cancer, and is parallel to the Hawaiian Islands. In Mazatlán, you will enjoy ideal weather throughout the year, complimented by some of the most vivid sunsets the world has to offer.



An aerial, sepia-toned photograph of Mazatlan, Mexico. The image captures a coastal cityscape with a prominent tall building featuring three spires on the left. The foreground shows a sandy beach with waves breaking on the left side. The middle ground is filled with various buildings, including a large, modern structure with a grid-like facade on the right, and numerous palm trees scattered throughout. The background shows rolling hills under a clear sky.

EXPERIENCE
MAZATLAN



32 LEVELS

OF LUXURY ON THE BEACH

191 CONDOMINIUMS | 2 PENTHOUSES



OWN YOUR DREAM DESTINATION

2 LEVELS OF AMENITIES



INFINITY POOL



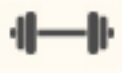
FIRE PIT



RESTAURANT



SPORTS BAR



GYM



PADDLE BALL COURT



MOVIE THEATER



BUSINESS CENTER



GAME ROOM



SUPERVISED CHILDREN'S AREA



24-HOUR SURVEILLANCE



3 ELEVATORS



HALF BASKETBALL COURT







Artist rendition to showcase design potential.



Artist rendition to showcase design potential.

ELECTRONIC SMART SYSTEM

Voice control

Control your SMART system using the voice assistance of Apple, Google, and Amazon.

At the touch of a dial from your **smart phone**, you can control almost every functioning amenity your condominium has to offer, including lighting, door locks, window blinds, power outlets, and much more.



SERVICES



CONCIERGE SERVICE



HOUSEKEEPING



ROOM SERVICE



LAUNDRY SERVICE



DAY CARE



Enjoy the best of Mazatlan. Close to you.

Our location is conveniently located on the north edge of Marina Mazatlán. You will be close to shopping, restaurants, nightlife and a variety of local amenities.

MODEL A1

INTERIOR | TERRACE
126 | 17

TOTAL
143m²

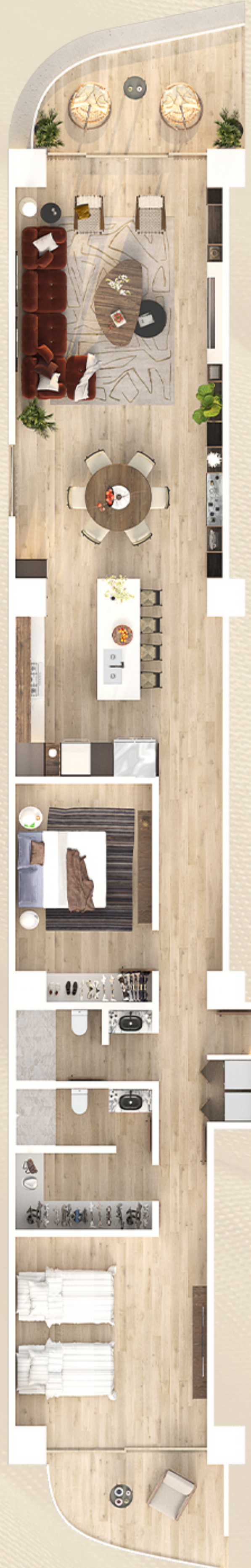


OCEAN VIEW

OCEAN VIEW



VIEW OF THE MARINA



Artist rendition to showcase design potential.

MODEL A2

INTERIOR | TERRACE
126 | 17

TOTAL
143m²

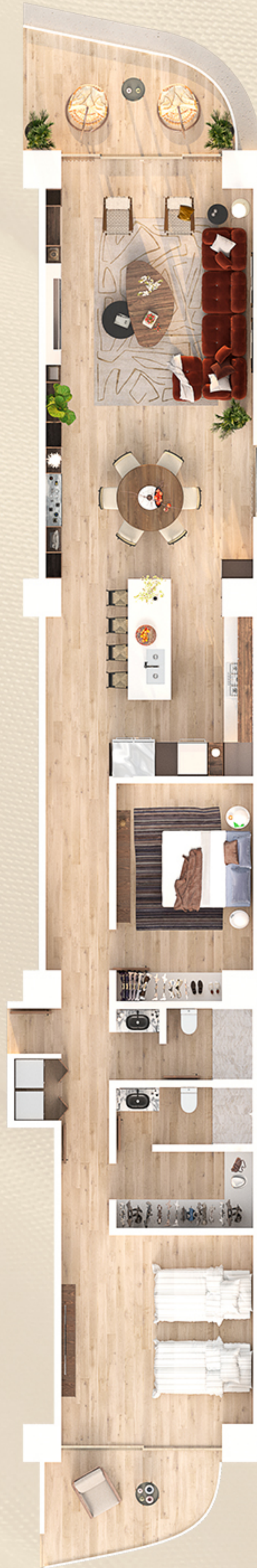


OCEAN VIEW

OCEAN VIEW



VIEW OF THE MARINA

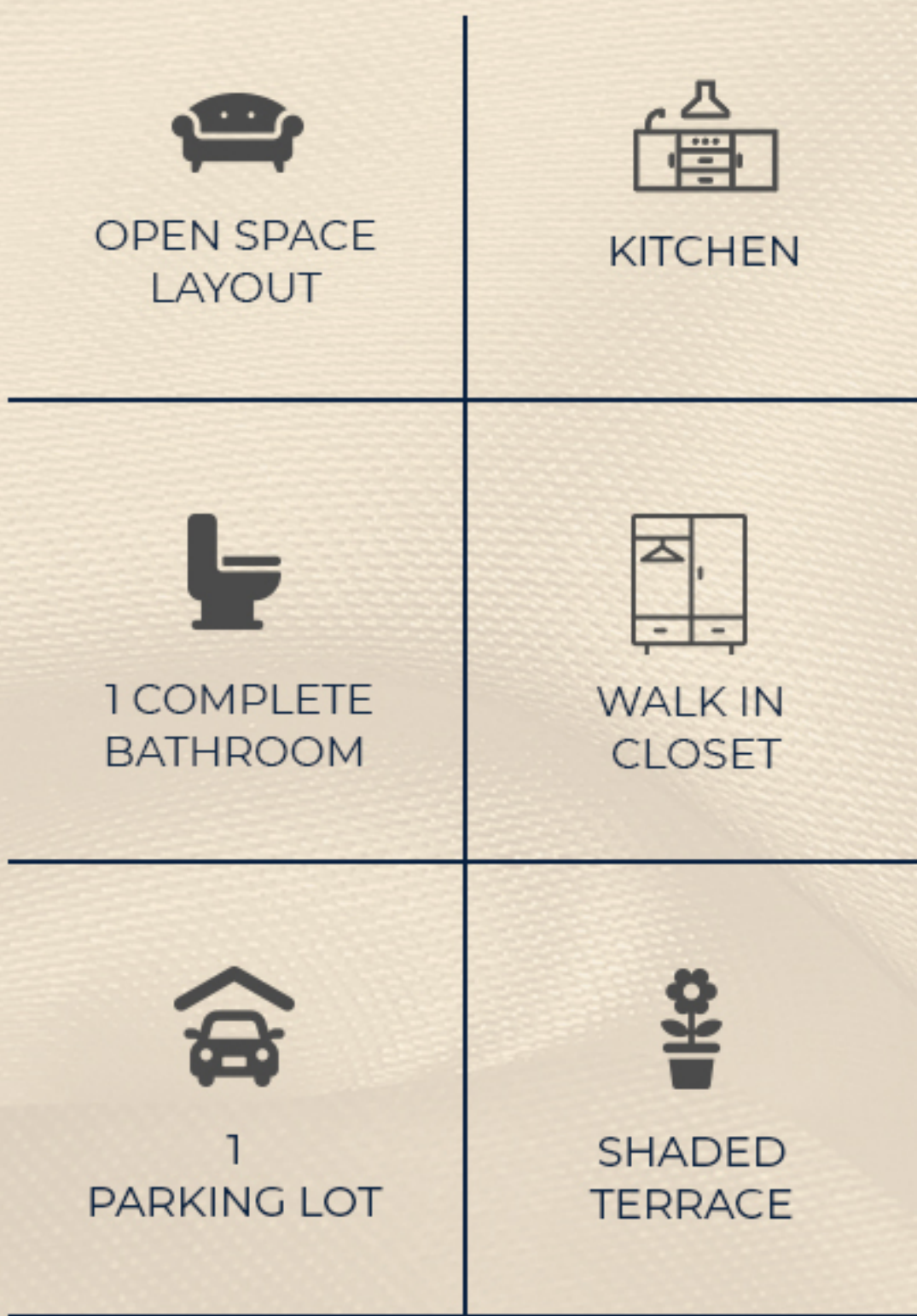


Artist rendition to showcase design potential.

MODEL B1

INTERIOR | TERRACE
43 | 15

TOTAL
58m²



VIEW OF THE MARINA

OCEAN VIEW



VIEW OF THE MARINA

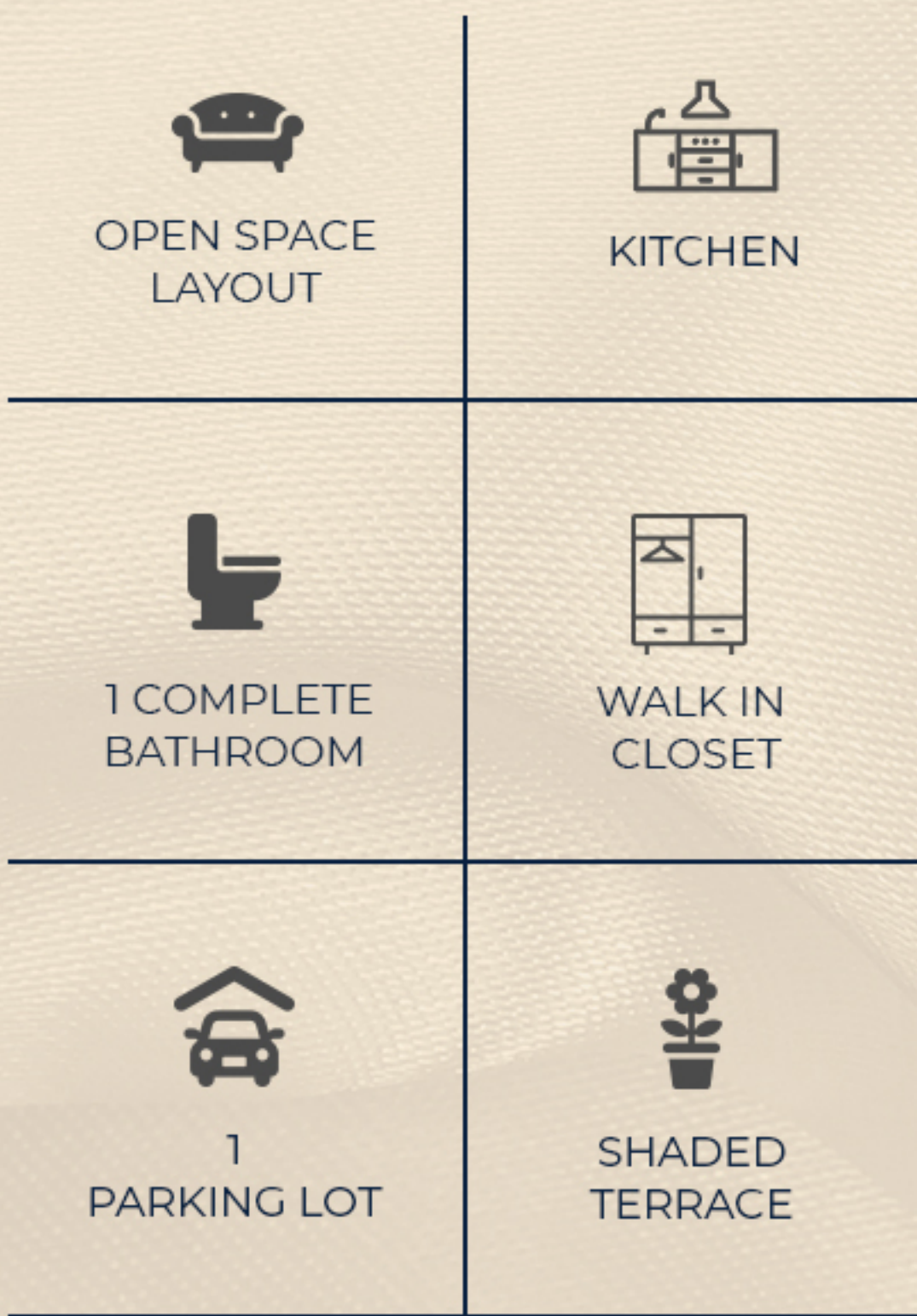


Artist rendition to showcase design potential.

MODEL B2

INTERIOR | TERRACE
43 | 15

TOTAL
58m²



VIEW OF THE MARINA

OCEAN VIEW



VIEW OF THE MARINA



Artist rendition to showcase design potential.

MODEL 1

LOCK OFF TYPE

INTERIOR | TERRACE
160 | 36

TOTAL
196 m²



OCEAN VIEW



VIEW OF THE MARINA



Artist rendition to showcase design potential.

MODEL 2

INTERIOR | TERRACE
113 | 20

TOTAL
133 m²



OCEAN VIEW



VIEW OF THE MARINA



Master bedroom with a closet, jacuzzi and bathroom with two showers.

Artist rendition to showcase design potential.

MODEL 3

INTERIOR

113

TERRACE

24

TOTAL

137 m²



LIVING ROOM



DINING ROOM



COCINA



2 BEDROOMS



2 COMPLETE BATHROOMS



LAUNDRY ROOM



SHADED TERRACE



OCEAN VIEW



1 PARKING LOT

OCEAN VIEW



VIEW OF THE MARINA



Artist rendition to showcase design potential.

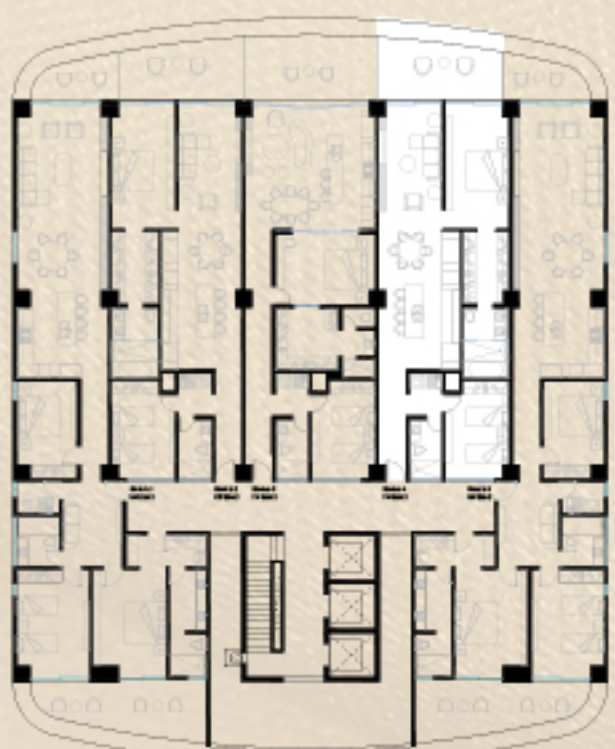
MODEL 4

INTERIOR | TERRACE
113 | 20

TOTAL
133 m²



OCEAN VIEW



VIEW OF THE MARINA



Master bedroom with a closet, jacuzzi and bathroom with two showers.

Artist rendition to showcase design potential.

MODEL 5

LOCK OFF TYPE

INTERIOR

TERRACE

160 | 36

TOTAL

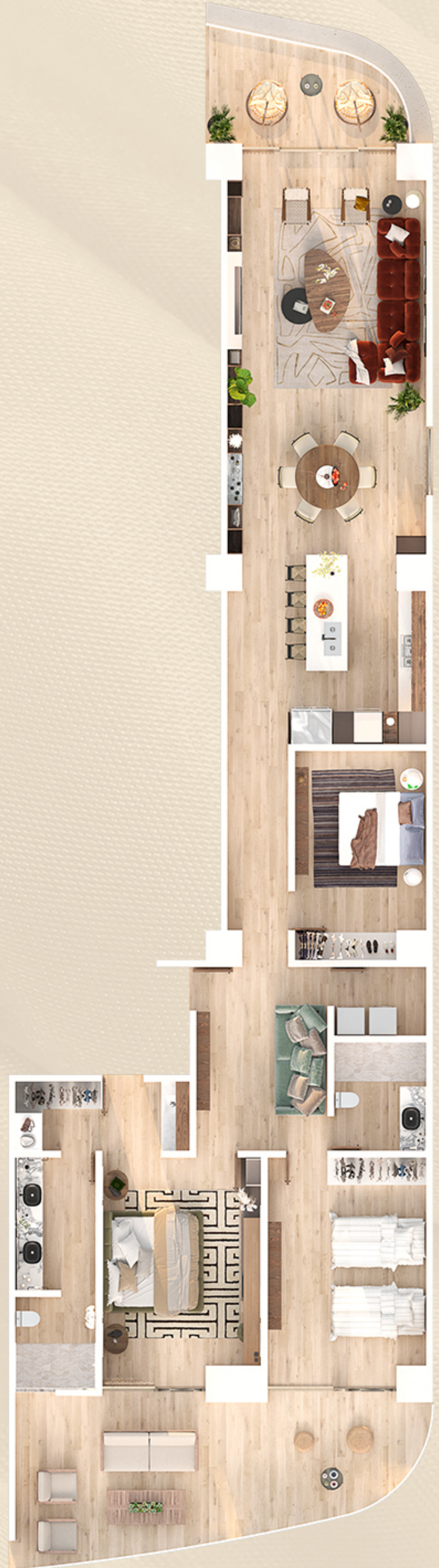
196 m²



OCEAN VIEW



VIEW OF THE MARINA



Artist rendition to showcase design potential.

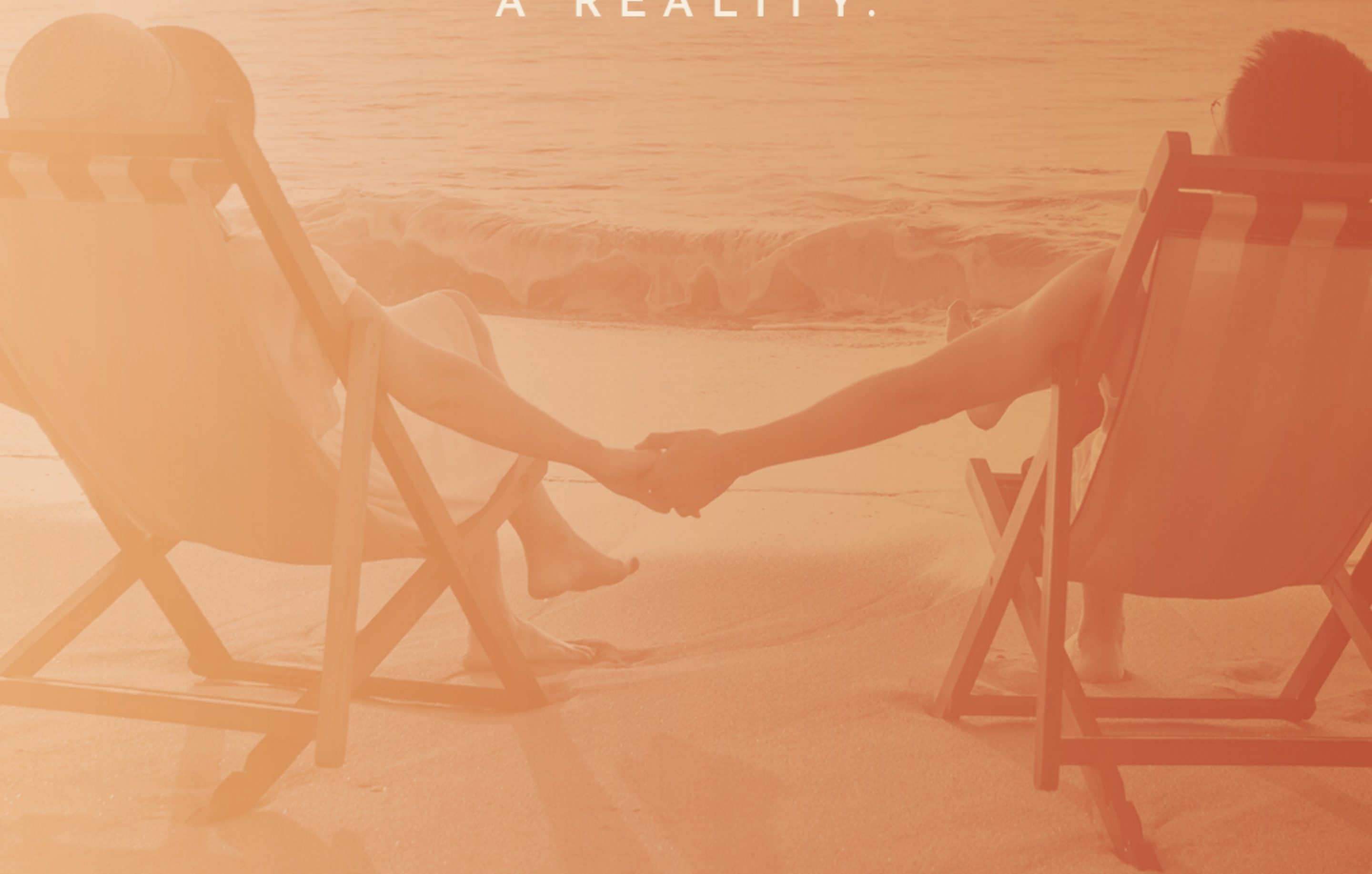


Artist rendition to showcase design potential.



Artist rendition to showcase design potential.

MAKE YOUR DREAMS
A REALITY.



BEACH



RESIDENCE

Anthony  Pilutik
SOCIO FUNDADOR

DEVELOPER



CONSTRUCTION



REAL ESTATE



CONTACT INFORMATION

 6 6 9 9 1 8 1 7 3 1

info@realtymex.com.mx

www.artemisabeachresidence.com